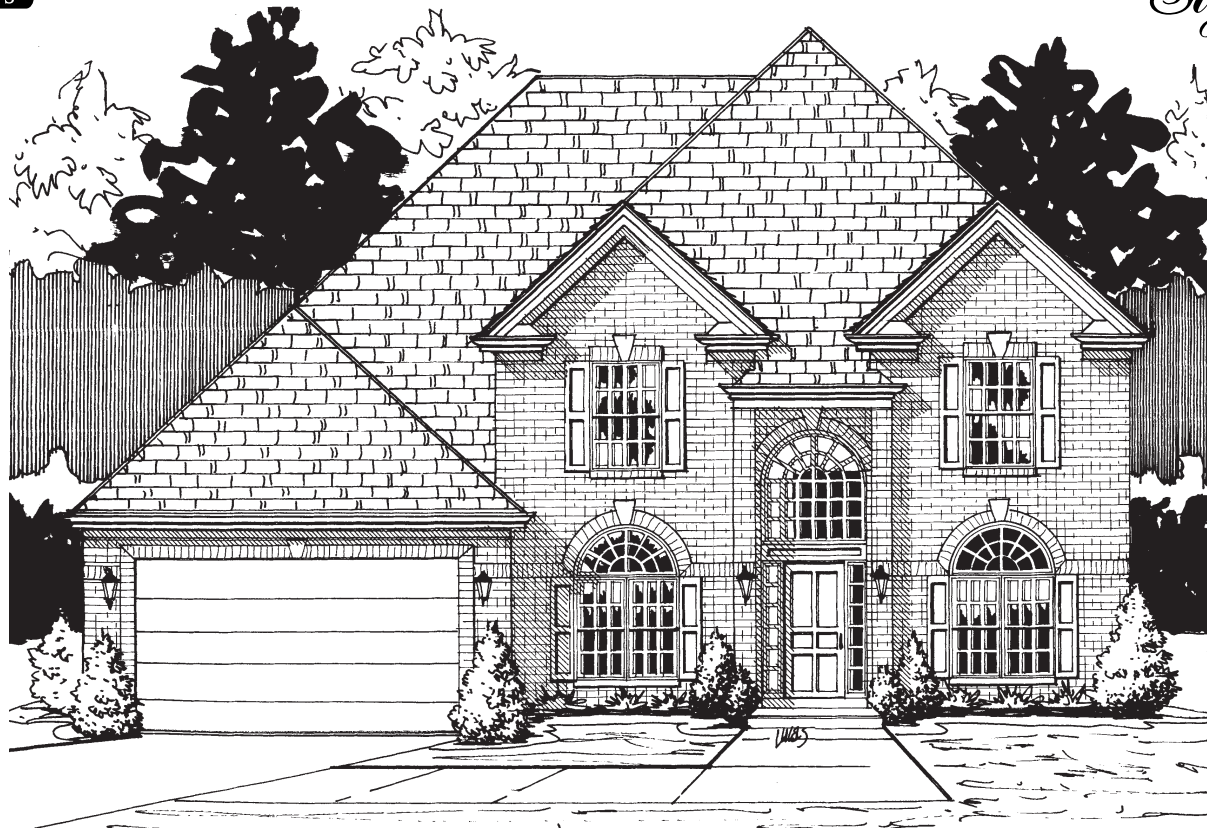


*A*  
AVONWORTH  
HEIGHTS

*The Newbern*



©2005 Signature Homes  
All rights reserved



**Prudential**  
Preferred Realty

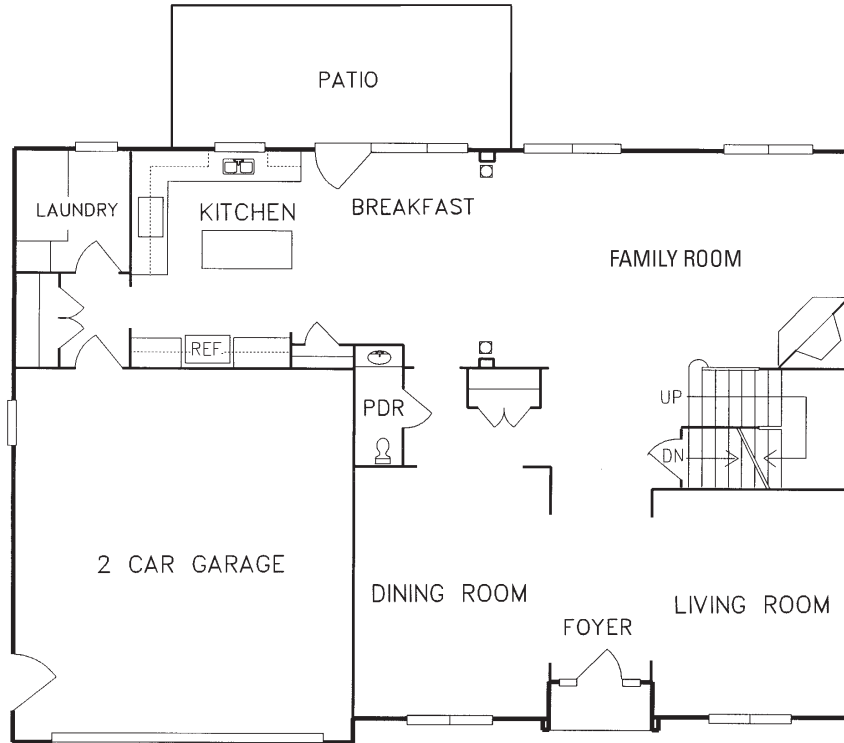
Independently owned and operated.

(412) 635-9817

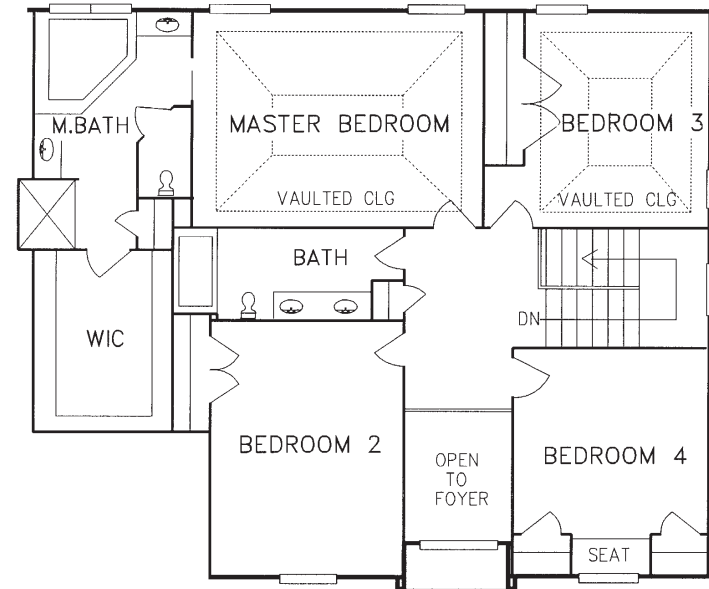
[www.PrudentialPreferredRealty.com](http://www.PrudentialPreferredRealty.com)

# The Newbern

©2005 Signature Homes  
All rights reserved



First Floor



Second Floor

Prudential Preferred Realty believes all material, editorial or otherwise, to be correct, but assumes no responsibility for its accuracy or the accuracy of its presentation.